

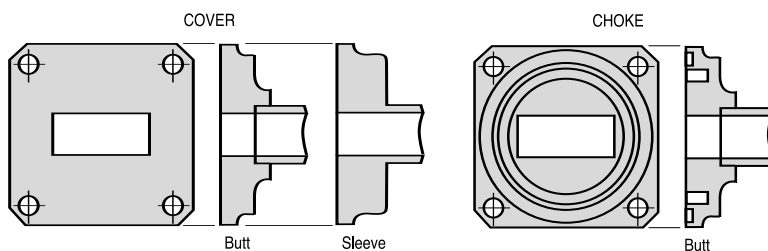
# Flanges

Waveguide Size		Flange Type	Aluminum			Brass			Mounting Holes (REF)	Gasket Model No.
EIA (ID)	RG (REF)*		Model No.	MIL F-3922	AN No. U/G	Model No.	MIL F-3922	AN No. U/G		

## Single Flanges

<b>WR12</b> .112x.061	99/U (S)	COVER SLEEVE	-	-	-	F12BST	67-003	387/U	(4)NO.4-40	-
	274/U (B)	CONTACT SLEEVE	-	-	-	K12BSC	66-001	1522/U	(4).104 DIA	-
<b>WR15</b> .148x.074	98/U (S)	COVER SLEEVE	-	-	-	F15BST	67-002	385/U	(4)NO.4-40	-
	273/U (B)	CONTACT SLEEVE	-	-	-	K15BSC	66-002	1523/U	(4).104 DIA	-
<b>WR22</b> .224x.112	97/U (S)	COVER SLEEVE	-	-	-	F22BST	67-001	383/U	(4)NO.4-40	-
	272/U (B)	CONTACT SLEEVE	-	-	-	K22BST	65-001	1521/U	(4)NO.4-40	-
<b>WR28</b> .280x.140	96/U (S)	COVER SLEEVE	F28ASC	-	-	F28BSC	54-003	599/U	(4).116 DIA	-
	271/U (B)	COVER BUTT	F28ABC	-	-	F28BBC	58-001	-	(4).116 DIA	-
		CHOKE BUTT	C28ABT	-	-	C28BBT	59-005	600A/U	(4)NO. 4-40	28GA12
<b>WR42</b> .420x.170	53/U (B)	COVER SLEEVE	F42ASC	54-002	597/U	F42BSC	54-001	595/U	(4).116 DIA	-
	121/U (A)	COVER BUTT	F42ABC	-	-	F42BBC	-	-	(4).116 DIA	-
		66/U (S)	CHOKE BUTT	C42ABT	59-004	598 A/U	C42BBT	59-003	596 A/U	(4)NO. 4-40
<b>WR51</b> .510x.255	351/U (A)	COVER SLEEVE	F51ASC	-	-	F51BSC	-	-	(4).144 DIA	-
	352/U (B)	COVER BUTT	F51ABC	70-024	-	F51BBC	70-022	-	(4).144 DIA	-
		353/U (B)	CHOKE BUTT	C51ABT	69-005	-	C51BBT	69-004	-	(4)NO.6-32
<b>WR62</b> .622x.311	349/U (A)	COVER SLEEVE	F62ASC	53-006	1665/U	F62BSC	53-005	419/U	(4).144 DIA	-
	91/U (B)	COVER BUTT	F62ABC	70-020	-	F62BBC	70-019	-	(4).144 DIA	-
		107/U (S)	CHOKE BUTT	C62ABT	59-002	1666/U	C62BBT	59-001	541A/U	(4)NO.6-32
<b>WR75</b> .750x.375	346/U (B)	COVER SLEEVE	F75ASC	53-008	-	F75BSC	53-007	-	(4).144 DIA	-
	347/U (A)	COVER BUTT	F75ABC	70-017	-	F75BBC	70-016	-	(4).144 DIA	-
		CHOKE BUTT	C75ABT	59-011	-	C75BBT	59-010	-	(4)NO.6-32	75GA12
<b>WR90</b> .900x.400	52/U (B)	COVER SLEEVE	F90ASC	53-003	135/U	F90BSC	53-001	39/U	(4).169 DIA	-
	67/U (A)	COVER BUTT	F90ABC	54-014	-	F90BBC	54-013	-	(4).169 DIA	-
		CHOKE BUTT	C90ABT	59-008	136B/U	C90BBT	59-006	40B/U	(4)NO.8-32	90GA22
<b>WR102</b> 1.020x.510	320/U (B)	COVER SLEEVE	F102ASC	-	-	F102BSC	-	-	(4).169 DIA	-
	COVER BUTT	F102ABC	70-014	-	F102BBC	70-013	1493/U	(4).169 DIA	-	
		CHOKE BUTT	C102ABT	69-002	-	C102BBT	69-001	1494/U	(4)NO.8-32	102GA12
<b>WR112</b> 1.122x.497	51/U (B)	COVER SLEEVE	F112ASC	53-004	138/U	F112BSC	53-002	51/U	(4).169 DIA	-
	68/U (A)	COVER BUTT	F112ABC	54-012	-	F112BBC	54-011	-	(4).169 DIA	-
		CHOKE BUTT	C112ABT	59-009	137B/U	C112BBT	59-007	52B/U	(4)NO.8-32	112GA32
<b>WR137†</b> 1.372x.622	50/U (B)	COVER SLEEVE	F137ASC	55-002	441/U	F137BSC	55-001	344/U	(6).199 DIA	-
	106/U (A)	COVER BUTT	F137ABC	-	-	F137BBC	-	-	(6).199 DIA	-
		CHOKE BUTT	C137ABT	60-002	440B/U	C137BBT	60-001	343B/U	(6)NO.10-32	137GA12
<b>WR187†</b> 1.872x.872	49/U (B)	COVER SLEEVE	F187ASC	57-001	407/U	F187BSC	57-002	149A/U	(8).199 DIA	-
	95/U (A)	COVER BUTT	F187ABC	-	-	F187BBC	-	-	(8).199 DIA	-
		CHOKE BUTT	C187ABT	62-001	406B/U	C187BBT	62-002	148C/U	(8)NO. 10-32	187GA12
<b>WR284†</b> 2.840x1.340	48/U (B)	COVER SLEEVE	F284ASC	56-002	584/U	F284BSC	56-001	53/U	(8).257 DIA	-
	75/U (A)	COVER BUTT	F284ABC	-	-	F284BBC	-	-	(8).257 DIA	-
		CHOKE BUTT	C284ABT	61-001	585A/U	C284BBT	61-002	54B/U	(8)NO.1/4-20	284GA12

Notes: \* Waveguide Material: (B)-Brass (A)-Aluminum (S)-Silver  
 † Flanges are circular and not rectangular as pictured below.



# Flanges

Waveguide Size		Flange Type	Aluminum			Brass			Mounting Holes (REF)	Gasket Model No.
EIA (ID)	RG (REF)*		Model No.	MIL F-3922	AN No. U/G	Model No.	MIL F-3922	AN No. U/G		

## CPR Flanges

<b>WR90</b> .900x.400	52/U (B)	FLAT BUTT	CPR90AFC	52-022	1737/U	CPR90BFC	52-021	1736/U	(8).169 DIA	-
	67/U (A)	GROOVED BUTT	CPR90AGC	52-044	1361/U	CPR90BGC	52-043	1360/U		90GA52
<b>WR112</b> 1.122x.497	51/U (B)	FLAT BUTT	CPR112AFC	52-020	1735/U	CPR112BFC	52-019	1734/U	(8).169 DIA	-
	68/U (A)	GROOVED BUTT	CPR112AGC	52-042	1359/U	CPR112BGC	52-041	1358/U		112GA42
<b>WR137</b> 1.372x.622	50/U (B)	FLAT BUTT	CPR137AFC	52-018	1733/U	CPR137BFC	52-017	1732/U	(8).196 DIA	-
	106/U (A)	GROOVED BUTT	CPR137AGC	52-040	1357/U	CPR137BGC	52-039	1356/U		137GA22
<b>WR159</b> 1.590x0.795	343/U (B)	FLAT BUTT	CPR159AFC	52-016	1731/U	CPR159BFC	52-015	1730/U	(8).257 DIA	-
	344/U (A)	GROOVED BUTT	CPR159AGC	52-038	1355/U	CPR159BGC	52-037	1354/U		159GA12
<b>WR187</b> 1.872x.872	49/U (B)	FLAT BUTT	CPR187AFC	52-014	1729/U	CPR187BFC	52-013	1728/U	(8).257 DIA	-
	95/U (A)	GROOVED BUTT	CPR187AGC	52-036	1353/U	CPR187BGC	52-035	1352/U		187GA22
<b>WR229</b> 2.290x1.145	340/U (B)	FLAT BUTT	CPR229AFC	52-012	1727/U	CPR229BFC	52-011	1726/U	(10).257 DIA	-
	341/U (A)	GROOVED BUTT	CPR229AGC	52-034	1351/U	CPR229BGC	52-033	1350/U		229GA12
<b>WR284</b> 2.840x1.340	48/U (B)	FLAT BUTT	CPR284AFC	52-010	1725/U	CPR284BFC	52-009	1724/U	(10).257 DIA	-
	75/U (A)	GROOVED BUTT	CPR284AGC	52-032	1349/U	CPR284BGC	52-031	1348/U		284GA22
<b>WR340</b> 3.400x1.700	112/U (B)	GROOVED SLEEVE	CPR340ASC	58-012	554A/U	CPR340BSC	58-011	553A/U	(10).266 DIA	340GA22
	113/U (A)	FLAT BUTT	CPR340AFC	52-008	1713/U	CPR340BFC	52-007	1712/U	(10).266 DIA	-
		GROOVED BUTT	CPR340AGC	52-030	1347/U	CPR340BGC	52-029	1346/U		340GA12
<b>WR430</b> 4.300x2.150	104/U (B)	GROOVED SLEEVE	CPR430ASC	58-010	437B/U	CPR430BSC	58-009	435B/U	(10).266 DIA	430GA22
	105/U (A)	FLAT BUTT	CPR430AFC	52-006	1711/U	CPR430BFC	52-005	1716/U	(10).266 DIA	-
		GROOVED BUTT	CPR430AGC	52-028	1345/U	CPR430BGC	52-027	1344/U		430GA12
<b>WR510</b> 5.100x2.550	337/U (B)	FLAT BUTT	CPR510AFC	52-004	1717/U	CPR510BFC	52-003	1715/U	(10).266 DIA	-
	338/U (A)	GROOVED BUTT	CPR510AGC	52-026	1719/U	CPR510BGC	52-025	1718/U		510GA12
<b>WR650</b> 6.500x3.250	69/U (B)	GROOVED SLEEVE	CPR650ASC	58-008	418B/U	CPR650BSC	58-007	417B/U	(10).330 DIA	650GA22
	103/U (A)	FLAT BUTT	CPR650AFC	52-002	1720/U	CPR650BFC	52-001	1714/U		-
		GROOVED BUTT	CPR650AGC	52-024	1343/U	CPR650BGC	52-023	1362/U		650GA12

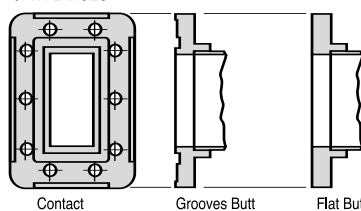
Waveguide Size		Flange Type	Aluminum			Brass			Mounting Holes (REF)	Gasket Model No.
EIA (ID)	RG (REF)*		Model No.	MIL F-3922	AN No. U/G	Model No.	MIL F-3922	AN No. U/G		

## CMR Flanges

<b>WR90</b> .900x.400	52/U (B)	FLAT SLEEVE	CMR90AST/C	63-008	1483/U	CMR90BST/C	63-004	1478/U	(4).147(4)6-32	-
	67/U (A)									
<b>WR112</b> 1.122x.497	51/U (B)	FLAT SLEEVE	CMR112AST/C	63-007	1482/U	CMR112BST/C	63-003	1477/U	(4).147(4)6-32	-
	68/U (A)									
<b>WR137</b> 1.372x.622	50/U (B)	FLAT SLEEVE	CMR137AST/C	63-006	1481/U	CMR137BST/C	63-002	1476/U	(4).147(4)6-32	-
	106/U (A)									
<b>WR187</b> 1.872x.872	49/U (B)	FLAT SLEEVE	CMR187AST/C	63-005	1480/U	CMR187BST/C	63-001	1475/U	(4).147(4)6-32	-
	95/U (A)									
<b>WR284</b> 2.840x1.340	48/U (B)	FLAT SLEEVE	CMR284AST/C	64-002	1484/U	CMR284BST/C	64-001	1479/U	(6).173(6)8-32	

**Notes:** \* Waveguide Material: (B)-Brass  
(A)-Aluminum (S)-Silver  
CPR = Contact Pressure Rectangular Flange  
CMR = Contact Miniature Rectangular Flange

CPR FLANGES



CMR FLANGES

